

Premium Series

64W 4' Shop Light

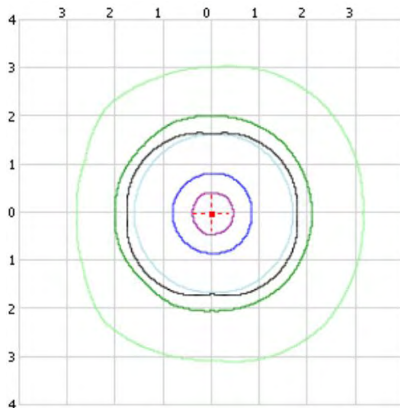
2-Lamp



L x W x H = 49" x 6.5" x 2.25"

Watts	Lumens	lm/W
62	7,747	124.5

Footcandle Plot @ 12 ft



■ 20 fc
 ■ 5 fc
 ■ 0.5 fc
 ■ 50% Cd
 ■ 10 fc
 ■ 1 fc
 ■ 0.1 fc
 + Max Cd
 Scale 1 = 12 ft

Description

Carson's 62W 4' linear LED 2-lamp shop light replaces a 2-lamp F54 fluorescent fixture. Available in three color temperatures, the single side powered G13 bi-pins retrofit into unshunted lampholders that run directly off line voltage. The jack chain mounted fixture is ideal for applications such as plants and warehouses with high ceiling.

Key Features

- Uses Epistar SMD2835 chip
- Rated for 50,000 hours
- 10 year warranty
- UL listing: E357799
- Power Factor: 0.81
- LED quantity: 384 chips
- Input voltage: AC 110V-277V
- Mounting: jack chains
- White powder coated aluminum fixture
- Frosted or clear polycarbonate lens
- Single side powered bi-pin energizes unshunted lampholder
- 1/2" electrical knockouts on junction box
- On/Off Sensor = Leviton 420-OSFLA-ITW
- Annual Savings of \$26.98

Calculations are based on 4,380 annual hours of operation and \$0.14 average cost per kWh

Ordering Information: CT-D02064FBN

CT	D	02	064	F	B	N	Options
Line	Chip	Dimmable	Watts	Series	Type	Color	
CT - Premium	D - DC	01 - Triac Dimmable 02 - Non-dimmable	064 - 62W/4 ft	F - Shop	B - Clear F - Frosted	W - 3500K C - 4100K N - 5000K	OS - On/Off Sensor