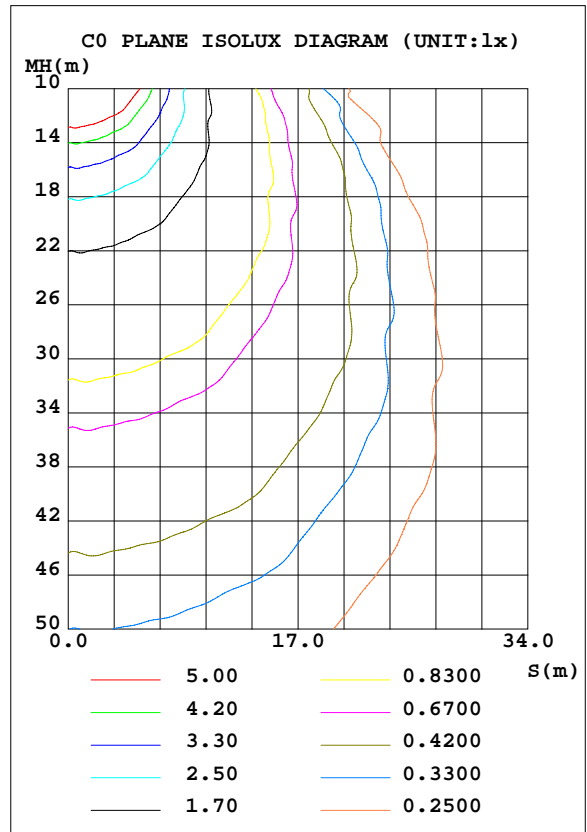
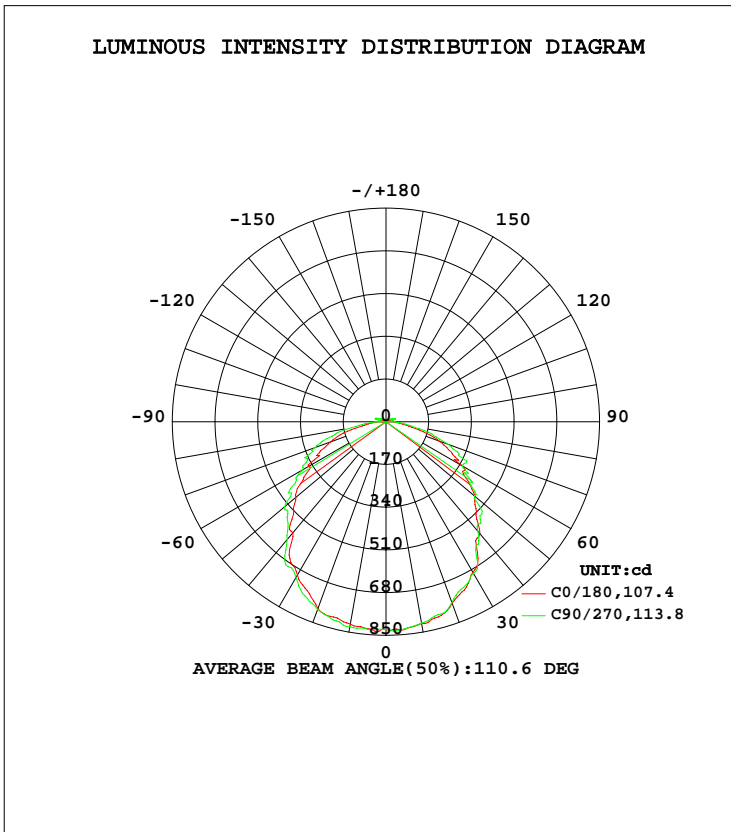


LUMINAIRE PHOTOMETRIC TEST REPORT

Test:U:120.0V I:0.2851A P:33.14W PF:0.9687 Lamp Flux:2533.8x1 lm		
NAME: LED Canopy Light	TYPE:N/A	WEIGHT:N/A
SPEC.:N/A	DIM.: N/A	SERIAL No.:N/A
MFR.: Carson	SUR.:N/A	Shielding Angle:N/A

DATA OF LAMP		PHOTOMETRIC DATA Eff: 76.46 lm/W			
MODEL	CT-D02032CPN	I _{max} (cd)	841.6	S/MH(C0/180)	1.26
NOMINAL POWER(W)	32	LOR(%)	100.0	S/MH(C90/270)	1.26
RATED VOLTAGE(V)	120	TOTAL FLUX(lm)	2533.8	η UP, DN(C0-180)	1.4,50.0
NOMINAL FLUX(lm)	2533.8	CIE CLASS	DIRECT	η UP, DN(C180-360)	1.3,47.4
LAMPS INSIDE	1	η up(%)	2.6	CIBSE SHR NOM	1.25
TEST VOLTAGE(V)	120.0	η down(%)	97.4	CIBSE SHR MAX	1.35



C Range: 0 - 360DEG
 C Interval: 22.5DEG
 Test Speed: 10.0deg/s
 Temperature:25.5DEG
 Operators:Hexy
 Test Date:2015-12-29

γ Range: 0 - 180DEG
 γ Interval: 1.0DEG
 Test System:EVERFINE GO-R5000_V2 SYSTEM V2.0.351
 Humidity:45%
 Test Distance:2.453m [K=1.0000]
 Remarks:

ZONAL FLUX DIAGRAM

ZONAL FLUX DIAGRAM:

γ	C0	C45	C90	C135	C180	C225	C270	C315	γ	Φ zone	Φ total	%lum, lamp
10	817.6	822.3	828.3	825.6	815.1	820.1	813.7	817.3	0- 10	78.91	78.91	3.11,3.11
20	791.9	798.4	794.9	796.5	768.6	774.3	765.7	781.8	10- 20	227.9	306.9	12.1,12.1
30	705.0	724.3	716.1	719.2	692.1	689.1	696.8	697.5	20- 30	345.2	652.0	25.7,25.7
40	576.5	634.8	611.9	629.2	581.5	603.0	568.9	618.9	30- 40	413.2	1065	42,42
50	468.1	507.6	526.5	500.6	461.7	478.7	459.3	485.6	40- 50	419.2	1485	58.6,58.6
60	356.1	409.8	383.0	391.9	347.3	355.4	351.6	363.8	50- 60	384.4	1869	73.8,73.8
70	235.1	268.5	300.3	259.7	223.8	239.5	261.6	243.1	60- 70	313.8	2183	86.1,86.1
80	96.17	140.9	138.9	131.2	82.92	115.4	105.7	123.9	70- 80	203.0	2386	94.2,94.2
90	36.50	46.39	36.31	41.34	24.48	32.26	28.86	38.62	80- 90	81.51	2467	97.4,97.4
100	22.88	19.49	13.93	20.44	23.36	18.75	14.12	19.35	90-100	16.78	2484	98,98
110	12.09	15.54	43.12	14.50	10.76	13.28	34.93	13.78	100-110	23.43	2507	99,99
120	0.5002	9.222	22.72	8.772	0.4359	8.519	20.56	8.159	110-120	13.85	2521	99.5,99.5
130	0.5515	3.838	15.37	2.532	0.4879	4.219	14.52	4.295	120-130	7.027	2528	99.8,99.8
140	0.6463	1.253	5.763	1.322	0.5804	1.549	7.674	1.780	130-140	3.623	2532	99.9,99.9
150	0.9543	1.178	1.389	1.114	0.7360	0.7907	1.267	0.9351	140-150	0.9197	2533	100,100
160	1.349	1.528	1.192	1.237	0.8324	0.8240	0.8301	1.067	150-160	0.4959	2533	100,100
170	1.220	0.9408	1.102	1.123	0.8678	0.8374	0.7878	1.092	160-170	0.3058	2534	100,100
180	1.043	0.9176	0.8727	0.9541	1.020	0.9906	0.8784	0.8953	170-180	0.0929	2534	100,100
DEG	LUMINOUS INTENSITY:cd Less than 25% Percent = 11.3 %									UNIT:lm		

Conical surface Flux(90deg): 1276.6 lm

%lum = 50.4%
 %lamp = 50.4%

Conical surface Flux(120deg): 1868.9 lm

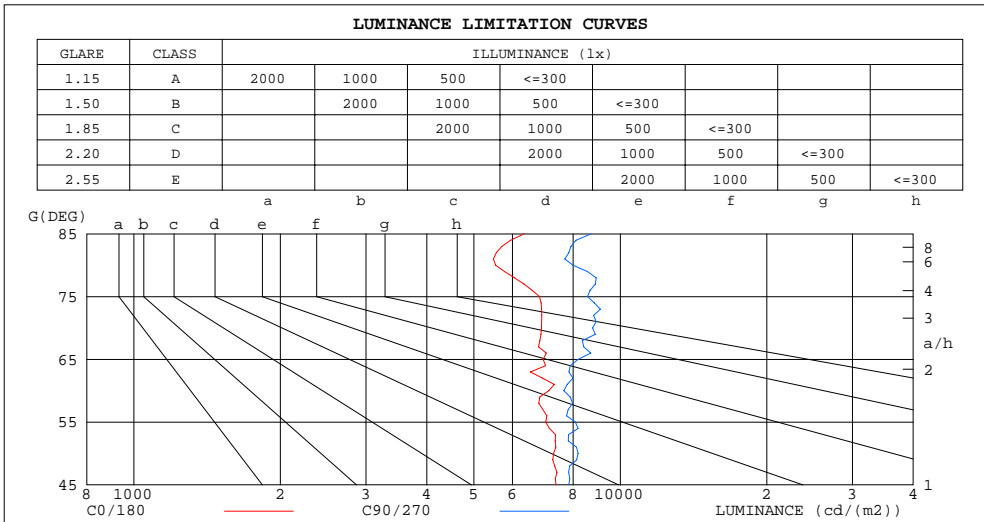
%lum = 73.8%
 %lamp = 73.8%

C Range: 0 - 360DEG
 C Interval: 22.5DEG
 Test Speed: 10.0deg/s
 Temperature:25.5DEG
 Operators:Hexy
 Test Date:2015-12-29

γ Range: 0 - 180DEG
 γ Interval: 1.0DEG
 Test System:EVERFINE GO-R5000_V2 SYSTEM V2.0.351
 Humidity:45%
 Test Distance:2.453m [K=1.0000]
 Remarks:

LUMINANCE LIMITATION CURVES

Test:U:120.0V I:0.2851A P:33.14W PF:0.9687 Lamp Flux:2533.8x1 lm		
NAME: LED Canopy Light	TYPE:N/A	WEIGHT:N/A
SPEC.:N/A	DIM.: N/A	SERIAL No.:N/A
MFR.: Carson	SUR.:N/A	Shielding Angle:N/A



LUMINANCE cd/(m2)		
G(DEG)	C0/180	C90/270
85	6341	8710
80	5544	7991
75	6821	8561
70	6883	8774
65	6942	8191
60	7130	7656
55	7025	8081
50	7290	8185
45	7375	7838

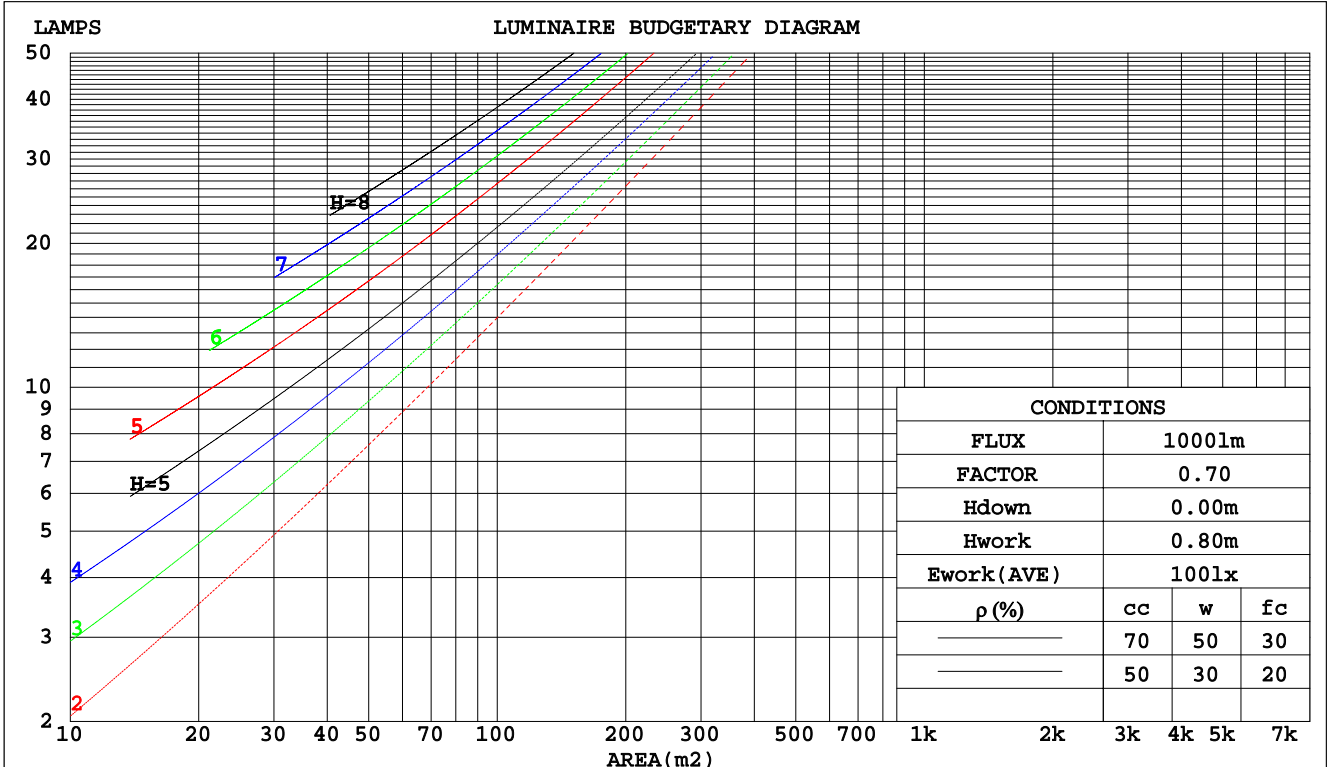
C Range: 0 - 360DEG
 C Interval: 22.5DEG
 Test Speed: 10.0deg/s
 Temperature:25.5DEG
 Operators:Hexy
 Test Date:2015-12-29

γ Range: 0 - 180DEG
 γ Interval: 1.0DEG
 Test System:EVERFINE GO-R5000_V2 SYSTEM V2.0.351
 Humidity:45%
 Test Distance:2.453m [K=1.0000]
 Remarks:

CU AND LUMINAIRE BUDGETARY ESTIMATE DIAGRAM

Test:U:120.0V I:0.2851A P:33.14W PF:0.9687 Lamp Flux:2533.8x1 lm		
NAME: LED Canopy Light	TYPE:N/A	WEIGHT:N/A
SPEC.:N/A	DIM.: N/A	SERIAL No.:N/A
MFR.: Carson	SUR.:N/A	Shielding Angle:N/A

pcc	80%			70%			50%			30%			10%			0
	50%	30%	10%	50%	30%	10%	50%	30%	10%	50%	30%	10%	50%	30%	10%	0
pw																
pfc	20%			20%			20%			20%			20%			0
RCR	RCR:Room Cavity Ratio															
	Coefficients of Utilization(CU)															
0.0	1.18	1.18	1.18	1.15	1.15	1.15	1.10	1.10	1.10	1.04	1.04	1.04	.00	.00	.00	.97
1.0	1.02	.98	.94	.00	.96	.92	.95	.91	.88	.91	.88	.85	.86	.84	.82	.80
2.0	.89	.82	.76	.87	.80	.74	.82	.77	.72	.79	.74	.70	.75	.72	.68	.66
3.0	.78	.69	.62	.76	.68	.62	.72	.66	.60	.69	.64	.59	.66	.62	.58	.55
4.0	.69	.60	.53	.67	.59	.52	.64	.57	.51	.62	.55	.50	.59	.54	.49	.47
5.0	.61	.52	.45	.60	.51	.45	.58	.50	.44	.55	.49	.43	.53	.47	.43	.40
6.0	.55	.46	.39	.54	.45	.39	.52	.44	.39	.50	.43	.38	.48	.42	.38	.35
7.0	.50	.41	.35	.49	.41	.35	.47	.40	.34	.46	.39	.34	.44	.38	.33	.31
8.0	.46	.37	.31	.45	.37	.31	.43	.36	.30	.42	.35	.30	.40	.34	.30	.28
9.0	.42	.33	.28	.41	.33	.28	.40	.33	.27	.38	.32	.27	.37	.31	.27	.25
10.0	.39	.31	.25	.38	.30	.25	.37	.30	.25	.36	.29	.25	.35	.29	.24	.23



C Range: 0 - 360DEG
 C Interval: 22.5DEG
 Test Speed: 10.0deg/s
 Temperature:25.5DEG
 Operators:Hexy
 Test Date:2015-12-29

γ Range: 0 - 180DEG
 γ Interval: 1.0DEG
 Test System:EVERFINE GO-R5000_V2 SYSTEM V2.0.351
 Humidity:45%
 Test Distance:2.453m [K=1.0000]
 Remarks:

WEC AND CCEC

Test:U:120.0V I:0.2851A P:33.14W PF:0.9687 Lamp Flux:2533.8x1 lm		
NAME: LED Canopy Light	TYPE:N/A	WEIGHT:N/A
SPEC.:N/A	DIM.: N/A	SERIAL No.:N/A
MFR.: Carson	SUR.:N/A	Shielding Angle:N/A

ρcc	80%			70%			50%			30%			10%			0
ρw	50%	30%	10%	50%	30%	10%	50%	30%	10%	50%	30%	10%	50%	30%	10%	0
ρfc	20%			20%			20%			20%			20%			0
RCR	RCR:Room Cavity Ratio						Wall Exitance Coefficients(WEC)									
0.0																
1.0	.329	.187	.059	.321	.183	.058	.306	.176	.056	.293	.169	.054	.280	.162	.052	
2.0	.303	.166	.051	.296	.163	.050	.283	.157	.049	.270	.152	.047	.259	.147	.046	
3.0	.277	.147	.044	.271	.145	.044	.259	.140	.043	.248	.136	.042	.238	.132	.041	
4.0	.254	.132	.039	.248	.130	.038	.238	.126	.038	.228	.123	.037	.219	.119	.036	
5.0	.234	.119	.034	.229	.117	.034	.219	.114	.034	.211	.111	.033	.203	.108	.033	
6.0	.216	.108	.031	.212	.107	.031	.203	.104	.030	.195	.102	.030	.188	.099	.029	
7.0	.200	.099	.028	.197	.098	.028	.189	.096	.028	.182	.093	.027	.175	.091	.027	
8.0	.187	.091	.026	.183	.090	.026	.177	.088	.025	.170	.086	.025	.164	.084	.025	
9.0	.175	.085	.024	.172	.084	.023	.166	.082	.023	.160	.080	.023	.154	.078	.023	
10.0	.164	.079	.022	.161	.078	.022	.156	.076	.021	.151	.075	.021	.146	.073	.021	

ρcc	80%			70%			50%			30%			10%			0
ρw	50%	30%	10%	50%	30%	10%	50%	30%	10%	50%	30%	10%	50%	30%	10%	0
ρfc	20%			20%			20%			20%			20%			0
RCR	RCR:Room Cavity Ratio						Ceiling Cavity Exitance Coefficients(CCEC)									
0.0	.210	.210	.210	.180	.180	.180	.123	.123	.123	.071	.071	.071	.023	.023	.023	
1.0	.202	.176	.153	.173	.151	.132	.118	.104	.091	.068	.060	.053	.022	.019	.017	
2.0	.194	.152	.117	.166	.131	.101	.114	.091	.071	.066	.053	.041	.021	.017	.013	
3.0	.186	.135	.094	.160	.116	.081	.110	.081	.057	.063	.047	.034	.020	.015	.011	
4.0	.179	.122	.078	.153	.105	.068	.105	.073	.048	.061	.043	.028	.020	.014	.009	
5.0	.171	.111	.067	.147	.096	.059	.101	.067	.041	.059	.039	.025	.019	.013	.008	
6.0	.164	.103	.059	.141	.089	.052	.097	.062	.037	.056	.037	.022	.018	.012	.007	
7.0	.157	.096	.054	.135	.083	.047	.093	.058	.033	.054	.034	.020	.017	.011	.007	
8.0	.150	.090	.049	.129	.078	.043	.089	.055	.030	.052	.032	.018	.017	.011	.006	
9.0	.144	.085	.046	.124	.074	.040	.086	.052	.028	.050	.031	.017	.016	.010	.006	
10.0	.138	.081	.043	.119	.070	.038	.083	.050	.027	.048	.029	.016	.016	.010	.005	

C Range: 0 - 360DEG
 C Interval: 22.5DEG
 Test Speed: 10.0deg/s
 Temperature:25.5DEG
 Operators:Hexy
 Test Date:2015-12-29

γ Range: 0 - 180DEG
 γ Interval: 1.0DEG
 Test System:EVERFINE GO-R5000_V2 SYSTEM V2.0.351
 Humidity:45%
 Test Distance:2.453m [K=1.0000]
 Remarks:

UGR(Unified Glare Rating) Table

Test:U:120.0V I:0.2851A P:33.14W PF:0.9687 Lamp Flux:2533.8x1 lm										
NAME: LED Canopy Light					TYPE:N/A			WEIGHT:N/A		
SPEC.:N/A					DIM.: N/A			SERIAL No.:N/A		
MFR.: Carson					SUR.:N/A			Shielding Angle:N/A		
ceiling/cavity	0.7	0.7	0.5	0.5	0.3	0.7	0.7	0.5	0.5	0.3
walls	0.5	0.3	0.5	0.3	0.3	0.5	0.3	0.5	0.3	0.3
working plane	0.2	0.2	0.2	0.2	0.2	0.2	0.2	0.2	0.2	0.2
Room dimensions	Viewed crosswise					Viewed endwise				
x = 2H y = 2H	19.6	21.1	19.9	21.3	21.6	20.2	21.7	20.5	21.9	22.2
3H	21.3	22.7	21.6	23.0	23.2	22.2	23.6	22.5	23.8	24.1
4H	22.0	23.4	22.4	23.7	24.0	23.1	24.4	23.4	24.7	25.0
6H	22.5	23.8	22.9	24.1	24.4	23.8	25.0	24.1	25.4	25.7
8H	22.7	23.9	23.0	24.2	24.6	24.0	25.2	24.4	25.5	25.9
12H	22.8	24.0	23.2	24.3	24.7	24.2	25.3	24.6	25.7	26.0
4H 2H	20.4	21.7	20.7	22.0	22.3	20.8	22.1	21.2	22.4	22.7
3H	22.3	23.4	22.7	23.8	24.1	23.0	24.2	23.4	24.5	24.9
4H	23.2	24.2	23.6	24.6	25.0	24.1	25.2	24.5	25.6	25.9
6H	23.8	24.8	24.3	25.2	25.6	25.0	25.9	25.4	26.3	26.8
8H	24.0	24.9	24.5	25.3	25.8	25.3	26.2	25.7	26.6	27.0
12H	24.2	25.1	24.7	25.5	26.0	25.5	26.3	26.0	26.8	27.2
8H 4H	23.6	24.5	24.1	24.9	25.4	24.4	25.3	24.9	25.7	26.2
6H	24.5	25.2	24.9	25.7	26.1	25.5	26.2	26.0	26.7	27.2
8H	24.8	25.5	25.3	26.0	26.5	25.9	26.6	26.4	27.0	27.6
12H	25.2	25.7	25.7	26.2	26.8	26.3	26.9	26.8	27.4	27.9
12H 4H	23.7	24.5	24.2	24.9	25.4	24.4	25.3	24.9	25.7	26.2
6H	24.6	25.3	25.1	25.7	26.3	25.6	26.2	26.1	26.7	27.2
8H	25.0	25.6	25.6	26.1	26.6	26.1	26.6	26.6	27.1	27.7
Variations with the observer position at spacings:										
S = 1.0H	+ 0.2 / - 0.2					+ 0.1 / - 0.1				
1.5H	+ 0.2 / - 0.3					+ 0.2 / - 0.3				
2.0H	+ 0.2 / - 0.5					+ 0.2 / - 0.4				

CIE Pub.117 Corrected 2534 lm Total Lamp Luminous Flux.(8log(F/F0) = 3.2)

C Range: 0 - 360DEG
 C Interval: 22.5DEG
 Test Speed: 10.0deg/s
 Temperature:25.5DEG
 Operators:Hexy
 Test Date:2015-12-29

γ Range: 0 - 180DEG
 γ Interval: 1.0DEG
 Test System:EVERFINE GO-R5000_V2 SYSTEM V2.0.351
 Humidity:45%
 Test Distance:2.453m [K=1.0000]
 Remarks:

UTILIZATION FACTORS TABLE

Test:U:120.0V I:0.2851A P:33.14W PF:0.9687 Lamp Flux:2533.8x1 lm		
NAME: LED Canopy Light	TYPE:N/A	WEIGHT:N/A
SPEC.:N/A	DIM.: N/A	SERIAL No.:N/A
MFR.: Carson	SUR.:N/A	Shielding Angle:N/A

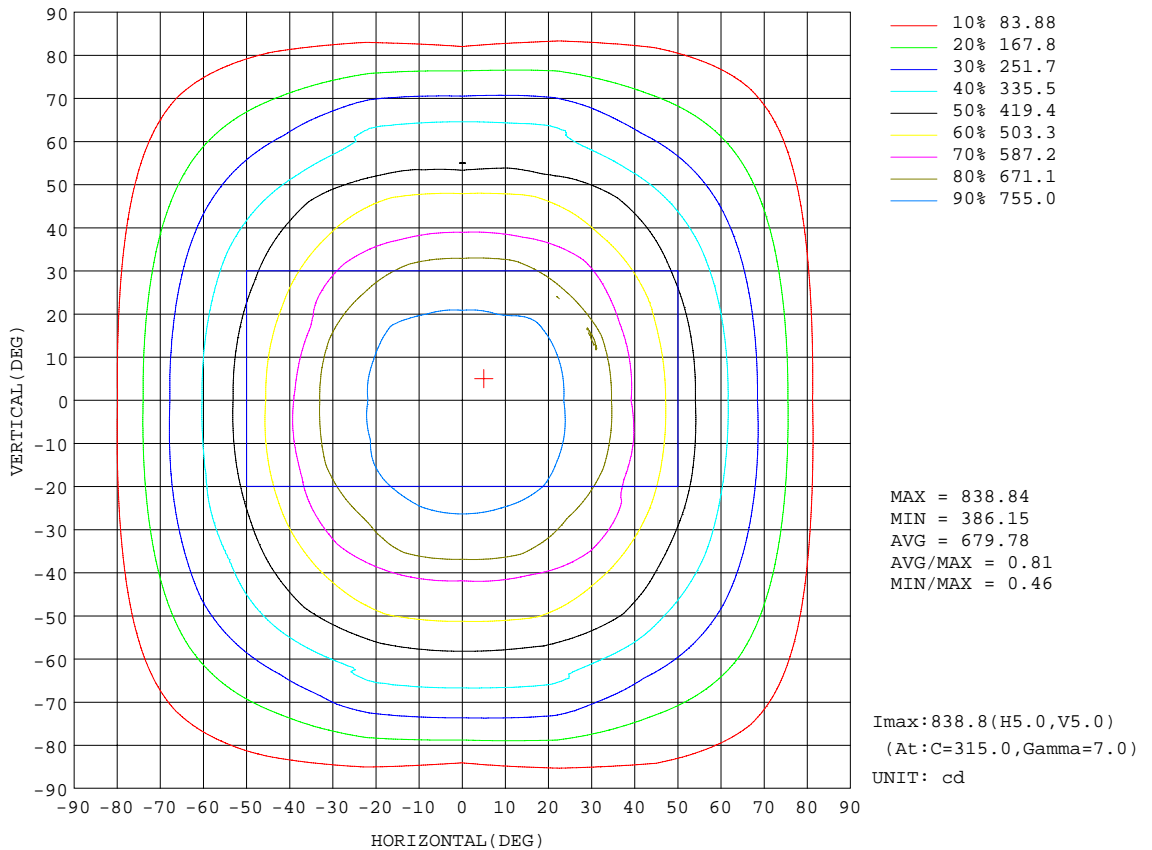
REFLECTANCE										
Ceiling	0.8	0.8	0.8	0.7	0.7	0.7	0.5	0.5	0.5	0
Walls	0.7	0.5	0.3	0.7	0.5	0.3	0.7	0.5	0.3	0
Working plane	0.2	0.2	0.2	0.2	0.2	0.2	0.2	0.2	0.2	0
ROOM INDEX	UTILIZATION FACTORS(PERCENT) $k(RI) \times RCR = 5$									
k = 0.60	56	44	37	55	44	37	54	44	37	31
0.80	66	54	46	65	53	46	63	53	46	39
1.00	74	63	55	73	62	55	70	63	54	47
1.25	81	70	63	79	69	62	76	68	61	54
1.50	86	76	68	84	75	68	81	73	67	58
2.00	93	84	77	91	82	76	87	80	74	66
2.50	97	89	82	95	87	81	90	84	79	70
3.00	100	93	87	98	91	86	94	88	83	74
4.00	105	98	93	102	96	92	97	93	89	79
5.00	107	102	97	104	100	96	99	96	92	82
ROOM INDEX	UF(total)									Direct
According to DIN EN 13032-2 2004			Suspended				SHRNOM = 1.25			

C Range: 0 - 360DEG
 C Interval: 22.5DEG
 Test Speed: 10.0deg/s
 Temperature:25.5DEG
 Operators:Hexy
 Test Date:2015-12-29

γ Range: 0 - 180DEG
 γ Interval: 1.0DEG
 Test System:EVERFINE GO-R5000_V2 SYSTEM V2.0.351
 Humidity:45%
 Test Distance:2.453m [K=1.0000]
 Remarks:

ISOCANDELA DIAGRAM

Test:U:120.0V I:0.2851A P:33.14W PF:0.9687 Lamp Flux:2533.8x1 lm		
NAME: LED Canopy Light	TYPE:N/A	WEIGHT:N/A
SPEC.:N/A	DIM.: N/A	SERIAL No.:N/A
MFR.: Carson	SUR.:N/A	Shielding Angle:N/A

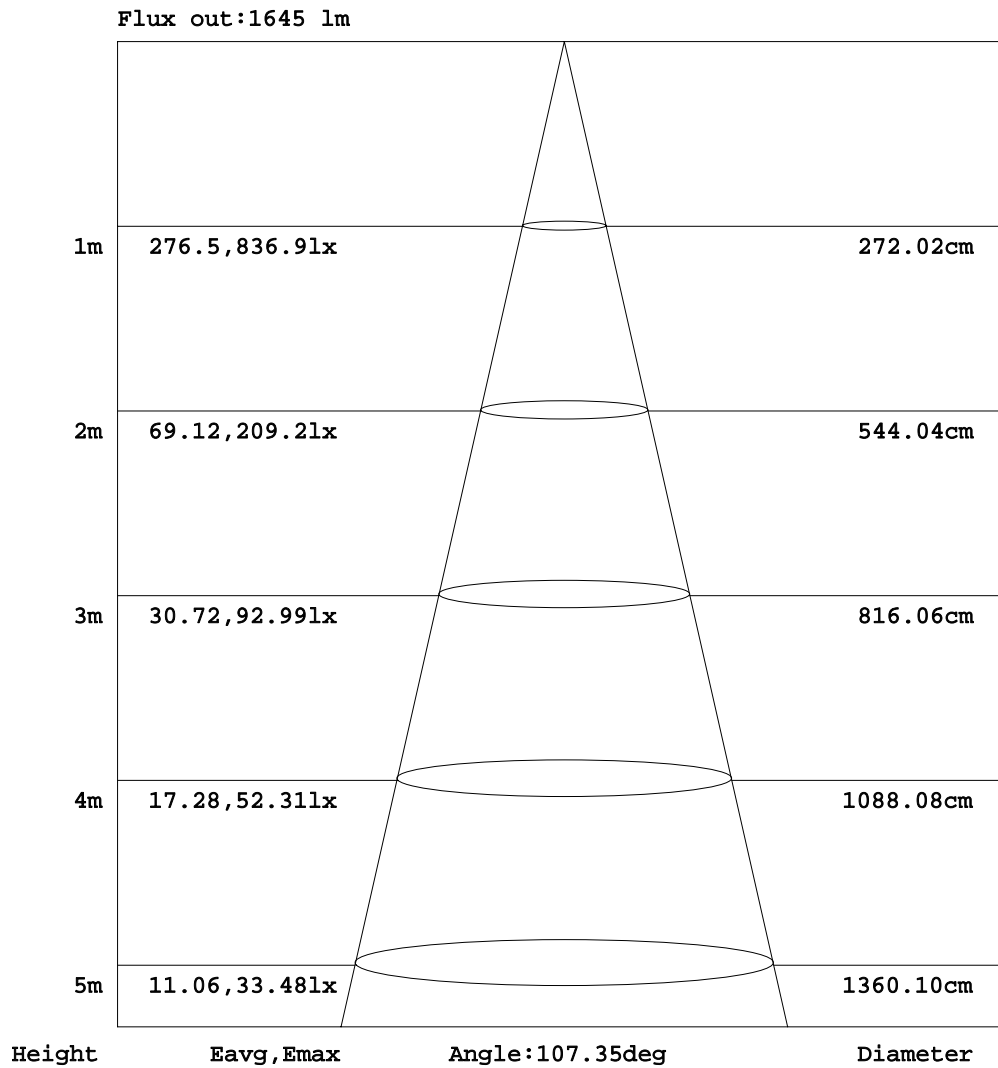


C Range: 0 - 360DEG
 C Interval: 22.5DEG
 Test Speed: 10.0deg/s
 Temperature:25.5DEG
 Operators:Hexy
 Test Date:2015-12-29

γ Range: 0 - 180DEG
 γ Interval: 1.0DEG
 Test System:EVERFINE GO-R5000_V2 SYSTEM V2.0.351
 Humidity:45%
 Test Distance:2.453m [K=1.0000]
 Remarks:

AAI Figure

Test:U:120.0V I:0.2851A P:33.14W PF:0.9687 Lamp Flux:2533.8x1 lm		
NAME: LED Canopy Light	TYPE:N/A	WEIGHT:N/A
SPEC.:N/A	DIM.: N/A	SERIAL No.:N/A
MFR.: Carson	SUR.:N/A	Shielding Angle:N/A



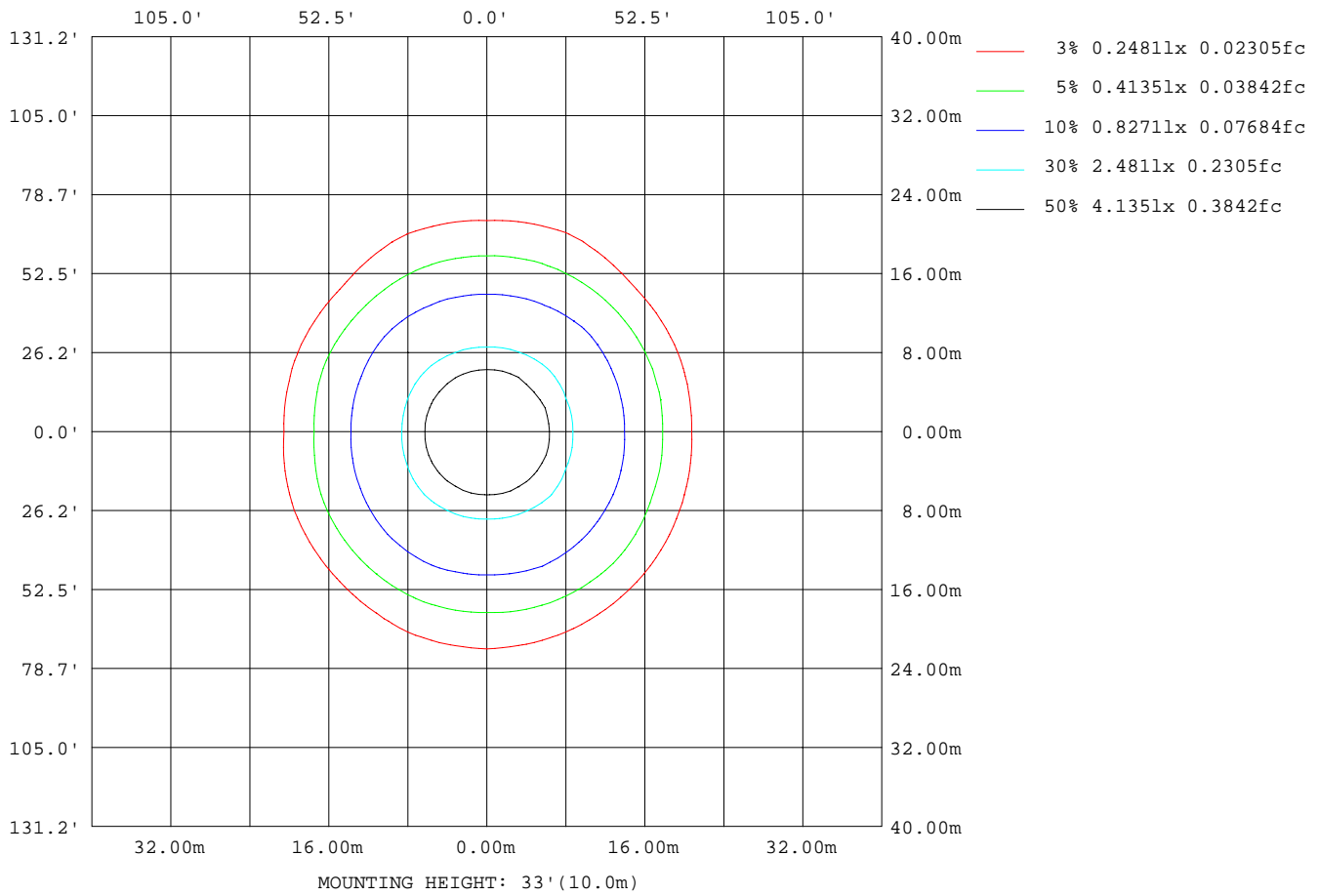
Note:The Curves indicate the illuminated area and the average illumination when the luminaire is at different distance.

C Range: 0 - 360DEG
 C Interval: 22.5DEG
 Test Speed: 10.0deg/s
 Temperature:25.5DEG
 Operators:Hexy
 Test Date:2015-12-29

γ Range: 0 - 180DEG
 γ Interval: 1.0DEG
 Test System:EVERFINE GO-R5000_V2 SYSTEM V2.0.351
 Humidity:45%
 Test Distance:2.453m [K=1.0000]
 Remarks:

ISOLUX DIAGRAM

Test:U:120.0V I:0.2851A P:33.14W PF:0.9687 Lamp Flux:2533.8x1 lm		
NAME: LED Canopy Light	TYPE:N/A	WEIGHT:N/A
SPEC.:N/A	DIM.: N/A	SERIAL No.:N/A
MFR.: Carson	SUR.:N/A	Shielding Angle:N/A



C Range: 0 - 360DEG
 C Interval: 22.5DEG
 Test Speed: 10.0deg/s
 Temperature:25.5DEG
 Operators:Hexy
 Test Date:2015-12-29

γ Range: 0 - 180DEG
 γ Interval: 1.0DEG
 Test System:EVERFINE GO-R5000_V2 SYSTEM V2.0.351
 Humidity:45%
 Test Distance:2.453m [K=1.0000]
 Remarks:

LED Avg.L Report

Test:U:120.0V I:0.2851A P:33.14W PF:0.9687 Lamp Flux:2533.8x1 lm		
NAME: LED Canopy Light	TYPE:N/A	WEIGHT:N/A
SPEC.:N/A	DIM.: N/A	SERIAL No.:N/A
MFR.: Carson	SUR.:N/A	Shielding Angle:N/A

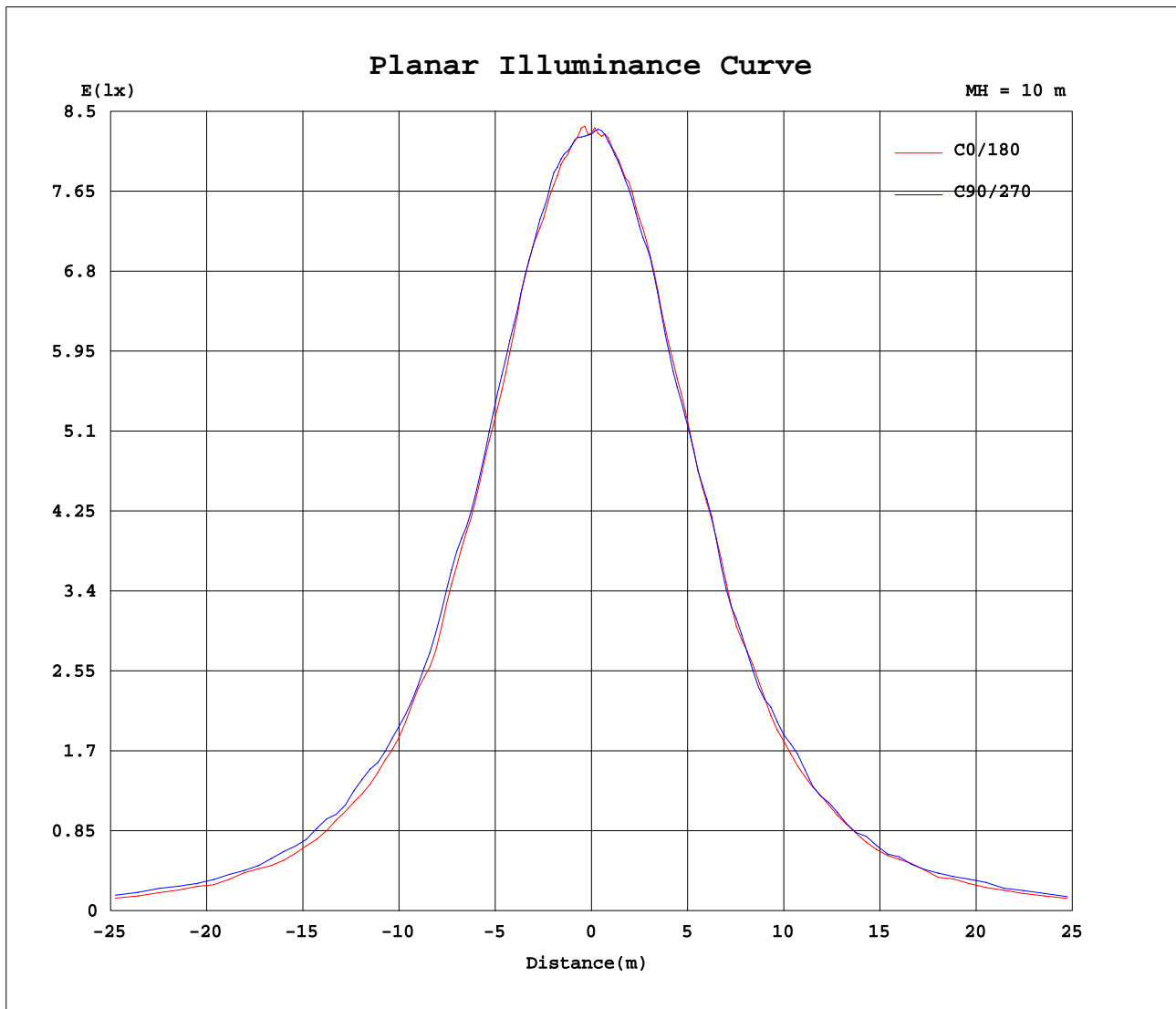
AvgL	cd/m2
L_0~180(65)av	6876
L_0~180(75)av	6337
L_0~180(85)av	5963
L_90~270(65)av	7856
L_90~270(75)av	7932
L_90~270(85)av	7586
L_45(65)av	7349
L_45(75)av	7457
L_45(85)av	9228

Standard: GB/T 29293-2012

C Range: 0 - 360DEG
 C Interval: 22.5DEG
 Test Speed: 10.0deg/s
 Temperature:25.5DEG
 Operators:Hexy
 Test Date:2015-12-29

γ Range: 0 - 180DEG
 γ Interval: 1.0DEG
 Test System:EVERFINE GO-R5000_V2 SYSTEM V2.0.351
 Humidity:45%
 Test Distance:2.453m [K=1.0000]
 Remarks:

Planar Illuminance Curve



C Range: 0 - 360DEG
C Interval: 22.5DEG
Test Speed: 10.0deg/s
Temperature: 25.5DEG
Operators: Hexy
Test Date: 2015-12-29

γ Range: 0 - 180DEG
 γ Interval: 1.0DEG
Test System: EVERFINE GO-R5000_V2 SYSTEM V2.0.351
Humidity: 45%
Test Distance: 2.453m [K=1.0000]
Remarks:

LUMINOUS DISTRIBUTION INTENSITY DATA

Test:U:120.0V I:0.2851A P:33.14W PF:0.9687 Lamp Flux:2533.8x1 lm		
NAME: LED Canopy Light	TYPE:N/A	WEIGHT:N/A
SPEC.:N/A	DIM.: N/A	SERIAL No.:N/A
MFR.: Carson	SUR.:N/A	Shielding Angle:N/A

Table--1

UNIT: cd

C(DEG) γ (DEG)	0	22.5	45	67.5	90	112.5	135	157.5	180	202.5	225	247.5	270	292.5	315	337.5			
0	826	826	826	826	826	826	826	826	826	826	826	826	826	826	826	826			
5	827	827	828	835	829	825	826	831	831	835	834	830	828	836	831	831			
10	818	822	822	827	828	830	826	817	815	823	820	814	814	813	817	828			
15	805	805	814	819	816	813	812	801	804	806	802	796	795	804	800	807			
20	792	802	798	791	795	801	797	783	769	777	774	773	766	774	782	796			
25	741	757	775	760	765	764	765	745	739	737	741	729	729	726	753	747			
30	705	721	724	725	716	725	719	709	692	698	689	701	697	703	697	691			
35	666	678	678	686	695	681	671	668	635	652	653	641	623	656	662	674			
40	577	610	635	631	612	626	629	592	582	580	603	581	569	587	619	588			
45	521	552	579	560	555	554	557	531	509	514	530	541	529	546	536	536			
50	468	485	508	523	526	527	501	473	462	460	479	476	459	488	486	474			
55	403	437	456	476	464	474	453	416	387	402	427	412	420	415	444	416			
60	356	363	410	409	383	402	392	375	347	365	355	358	352	371	364	356			
65	293	314	331	344	346	340	319	308	288	295	290	339	318	344	302	308			
70	235	259	269	311	300	296	260	253	224	238	240	266	262	274	243	240			
75	176	199	209	237	222	224	201	182	152	166	177	188	189	193	185	182			
80	96.2	127	141	161	139	150	131	111	82.9	102	115	114	106	125	124	113			
85	55.2	77.4	91.3	92.3	76.0	89.6	82.1	71.5	48.7	64.3	71.2	69.5	56.3	72.3	77.1	69.7			
90	36.5	37.4	46.4	46.0	36.3	43.1	41.3	41.4	24.5	29.4	32.3	32.5	28.9	34.8	38.6	39.4			
95	21.2	19.6	1.67	5.83	7.11	5.58	1.59	23.6	20.8	26.7	5.16	0.37	0.27	0.33	6.44	23.8			
100	22.9	19.0	19.5	14.1	13.9	15.5	20.4	19.0	23.4	19.0	18.8	13.7	14.1	15.3	19.4	18.7			
105	17.5	15.2	20.4	36.5	44.2	35.9	20.9	15.4	17.3	14.5	17.8	31.1	37.3	31.8	19.5	15.0			
110	12.1	10.3	15.5	36.1	43.1	32.4	14.5	9.01	10.8	8.49	13.3	28.7	34.9	28.8	13.8	9.58			
115	5.27	1.98	12.1	25.5	29.8	24.5	11.2	1.85	4.50	1.21	10.7	22.4	26.5	22.4	10.6	2.46			
120	0.50	0.61	9.22	19.8	22.7	19.0	8.77	0.64	0.44	0.64	8.52	17.5	20.6	17.7	8.16	0.59			
125	0.48	0.55	6.86	16.0	18.6	15.5	6.38	0.56	0.45	0.61	6.01	13.9	16.6	14.1	5.55	0.54			
130	0.55	0.57	3.84	12.4	15.4	12.2	2.53	0.58	0.49	0.57	4.22	12.9	14.5	12.9	4.30	0.51			
135	0.61	0.63	1.48	8.22	10.3	8.08	1.81	0.65	0.55	0.59	3.01	11.4	15.5	11.9	3.16	0.57			
140	0.65	0.66	1.25	2.81	5.76	2.70	1.32	0.72	0.58	0.61	1.55	4.30	7.67	4.90	1.78	0.54			
145	0.80	0.85	1.12	1.94	2.01	1.64	1.06	0.83	0.56	0.64	0.89	1.88	2.59	2.45	1.09	0.68			
150	0.95	1.14	1.18	1.52	1.39	1.31	1.11	0.99	0.74	0.70	0.79	1.09	1.27	1.43	0.94	0.83			
155	1.15	1.20	1.31	1.34	1.22	1.16	1.20	1.13	0.74	0.75	0.82	0.83	0.88	1.08	1.16	0.93			
160	1.35	1.35	1.53	1.20	1.19	1.21	1.24	1.23	0.83	0.84	0.82	0.82	0.83	1.07	1.07	1.10			
165	1.55	1.52	1.40	1.21	1.16	1.16	1.20	1.22	0.86	0.86	0.85	0.83	0.81	0.91	0.71	1.21			
170	1.22	0.98	0.94	1.30	1.10	1.07	1.12	1.14	0.87	0.87	0.84	0.82	0.79	0.86	1.09	0.68			
175	1.34	1.37	1.29	1.11	0.99	0.96	1.00	1.04	0.88	0.88	0.86	0.80	0.78	0.79	0.97	1.05			
180	1.04	1.01	0.92	0.91	0.87	0.89	0.95	0.97	1.02	1.01	0.99	0.93	0.88	0.88	0.90	0.95			

C Range: 0 - 360DEG
 C Interval: 22.5DEG
 Test Speed: 10.0deg/s
 Temperature:25.5DEG
 Operators:Hexy
 Test Date:2015-12-29

γ Range: 0 - 180DEG
 γ Interval: 1.0DEG
 Test System:EVERFINE GO-R5000_V2 SYSTEM V2.0.351
 Humidity:45%
 Test Distance:2.453m [K=1.0000]
 Remarks: