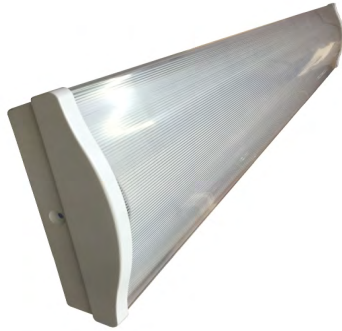


Premium Series

36W 4' Wrap Around

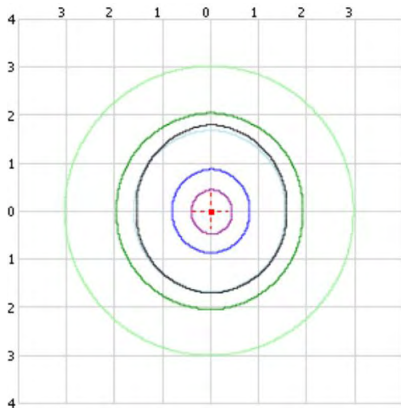
Curved Lens



L x W x H = 49" x 7" x 2.75"

Watts	Lumens	lm/W
36	4,343	119.5

Footcandle Plot @ 10 ft



■ 20 fc
 ■ 5 fc
 ■ 0.5 fc
 ■ 50% Cd
 ■ 10 fc
 ■ 1 fc
 ■ 0.1 fc
 + Max Cd
 Scale 1 = 10 ft

Description

Carson's 36W 4' linear LED 2-lamp curved wrap around delivers general ambient lighting for dry wall ceiling applications. Compatible with sensors and emergency batteries, the surface mounted fixture has a metal housing with plastic end caps and acrylic diffuser. Ideal to replace F32 fluorescent wrap arounds in hallways and offices.

Key Features

- Uses Epistar SMD2835 chip
- Rated for 50,000 hours
- 10 year warranty
- UL listing: E468194
- Power Factor: 0.99
- LED quantity: 192 chips
- Input voltage: AC 110V-277V
- Surface mount ceiling application
- Metal housing with plastic end caps
- Curved acrylic diffuser
- Single side powered bi-pin energizes unshunted lampholder
- Dimmable Sensor = Wattstopper FSP211
- On/Off Sensor = Leviton 420-OSFLA-ITW
- Annual Savings of \$17.17

Calculations are based on 4,380 annual hours of operation and \$0.14 average cost per kWh

Ordering Information: CT-D02136ABN

CT	D	02	136	A	B	N	Options
Line	Chip	Dimmable	Watts	Series	Type	Color	
CT - Premium CL - Lite	D - DC	01 - Triac Dimmable 02 - Non-dimmable 03 - 0-10V Dimmable	136 - 36W/4 ft curved	A - Wrap	B - Clear F - Frosted G - Glass	Y - 3000K W - 3500K C - 4100K N - 5000K D - 6500K	DS - Dimmable Sensor OS - On/Off Sensor EB - Emergency Battery