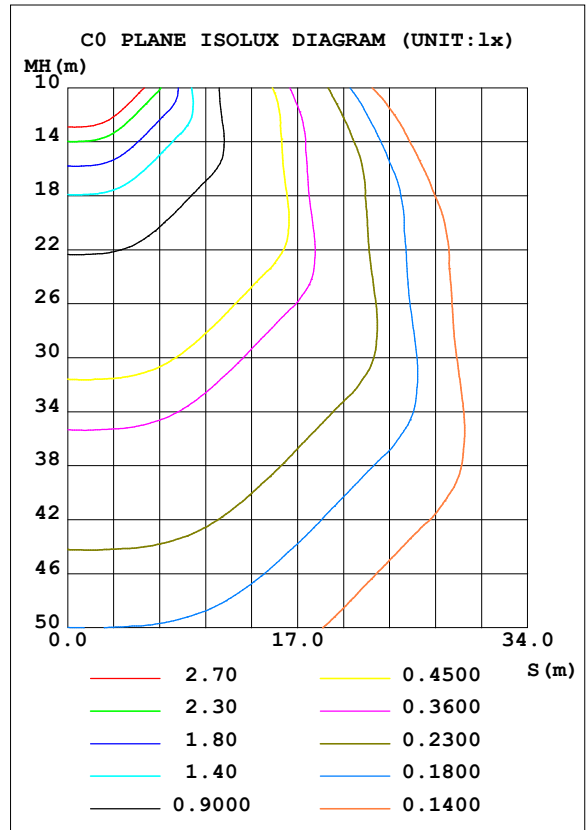
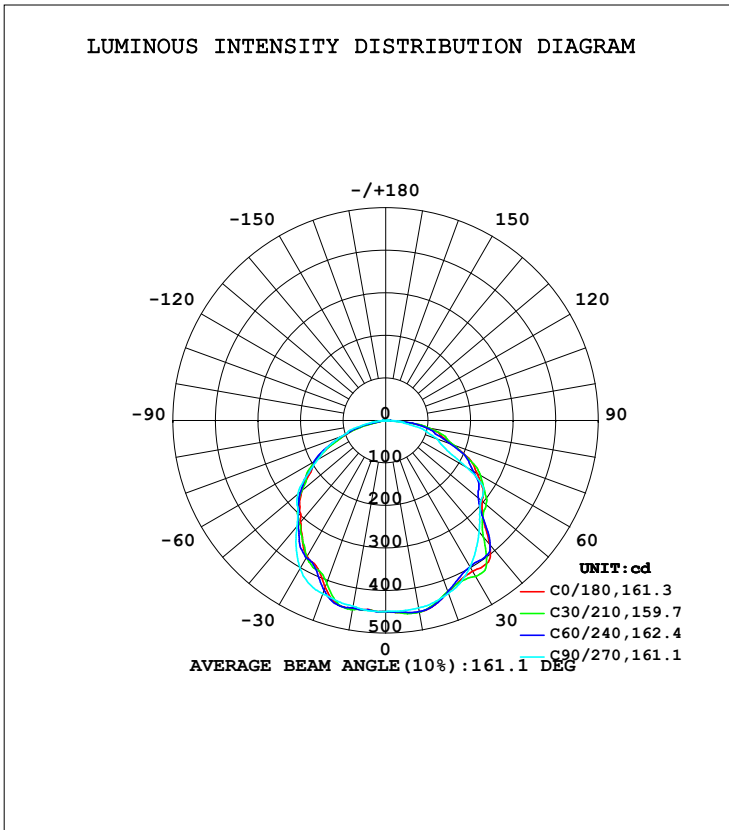


LUMINAIRE PHOTOMETRIC TEST REPORT

Test:U:120.1V I:0.0981A P:9.445W PF:0.8021 Freq:60.01Hz Lamp Flux:1348.38x1 lm		
NAME: 2'LED T8 Tube	TYPE:clear	WEIGHT:
SPEC.:	DIM.:	SERIAL No.:
MFR.: EVERFINE	SUR.:0.55*0.03	Shielding Angle:

DATA OF LAMP		PHOTOMETRIC DATA Eff: 142.76 lm/W			
MODEL	CT-D02010TBN	I <sub>max</sub> (cd)	458.2	S/MH (C0/180)	1.23
NOMINAL POWER (W)	10	LOR (%)	100.0	S/MH (C90/270)	1.30
RATED VOLTAGE (V)		TOTAL FLUX (lm)	1348.4	η UP, DN (C0-180)	0.5, 51.3
NOMINAL FLUX (lm)	1348.38	CIE CLASS	DIRECT	η UP, DN (C180-360)	0.4, 47.8
LAMPS INSIDE	1	η up (%)	0.9	CIBSE SHR NOM	1.25
TEST VOLTAGE (V)		η down (%)	99.1	CIBSE SHR MAX	1.35



C Range: 0 - 360DEG  
 C Interval: 15.0DEG  
 Test Speed: HIGH  
 Temperature: 25.3DEG  
 Operators: Paul  
 Test Date: 2017-03-13

γ Range: 0 - 180DEG  
 γ Interval: 0.5DEG  
 Test System: EVERFINE GO-R5000\_V2 SYSTEM V2.0.364  
 Humidity: 65.0%  
 Test Distance: 2.900m [K=0.8401]  
 Remarks:

## ZONAL FLUX DIAGRAM

ZONAL FLUX DIAGRAM:

$\gamma$	C0	C45	C90	C135	C180	C225	C270	C315	$\gamma$	$\Phi$ zone	$\Phi$ total	%lum, lamp
10	457.1	457.1	447.3	441.5	448.2	450.6	443.1	447.7	0- 10	42.92	42.92	3.18,3.18
20	429.5	427.7	432.5	420.6	417.2	412.7	433.2	437.9	10- 20	124.7	167.7	12.4,12.4
30	409.2	414.1	397.4	397.2	369.5	374.3	402.4	407.4	20- 30	188.4	356.0	26.4,26.4
40	380.8	363.9	342.3	347.1	312.3	314.6	324.4	354.3	30- 40	232.2	588.2	43.6,43.6
50	296.3	298.4	293.0	251.8	257.1	263.9	269.1	281.5	40- 50	240.7	828.9	61.5,61.5
60	248.0	247.6	217.6	183.3	191.8	194.9	184.9	223.8	50- 60	219.5	1048	77.8,77.8
70	168.4	168.1	129.6	97.31	101.3	104.5	112.0	114.6	60- 70	168.5	1217	90.3,90.3
80	99.94	100.2	56.67	35.53	9.574	9.924	40.30	57.23	70- 80	93.59	1311	97.2,97.2
90	9.111	8.236	7.536	4.192	6.098	6.349	6.327	7.361	80- 90	26.14	1337	99.1,99.1
100	4.807	4.299	3.601	1.588	3.383	3.390	2.917	2.864	90-100	4.984	1342	99.5,99.5
110	3.259	2.897	2.015	0.7726	2.324	2.343	1.585	1.475	100-110	2.715	1344	99.7,99.7
120	2.145	2.000	1.229	0.4801	1.533	1.541	0.8356	0.8618	110-120	1.647	1346	99.8,99.8
130	1.532	1.442	0.8692	0.3943	1.009	1.014	0.5097	0.5884	120-130	0.9922	1347	99.9,99.9
140	1.042	1.052	0.6309	0.3480	0.7399	0.7601	0.4040	0.4747	130-140	0.6195	1348	99.9,99.9
150	0.6949	0.7311	0.4551	0.2995	0.5551	0.5731	0.3913	0.4331	140-150	0.3769	1348	100,100
160	0.5024	0.5297	0.3841	0.3224	0.4537	0.4636	0.4039	0.4157	150-160	0.2179	1348	100,100
170	0.3827	0.3963	0.3320	0.3300	0.3870	0.3769	0.3969	0.3981	160-170	0.1141	1348	100,100
180	0.3691	0.3410	0.3971	0.3754	0.3431	0.3448	0.3724	0.3748	170-180	0.0348	1348	100,100
DEG	LUMINOUS INTENSITY:cd									UNIT:lm		

Conical surface Flux(90deg): 709.52 lm

%lum = 52.6%

%lamp = 52.6%

Conical surface Flux(120deg): 1048.4 lm

%lum = 77.8%

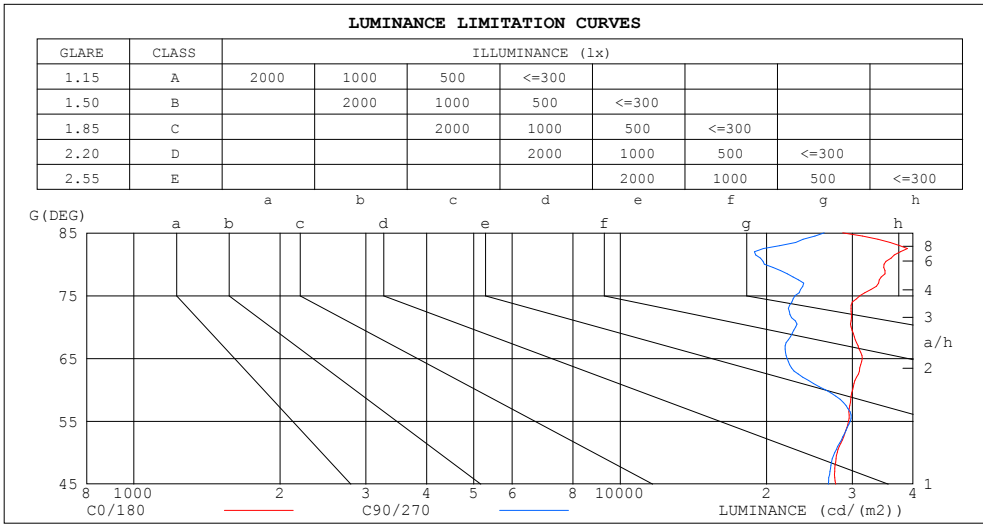
%lamp = 77.8%

C Range: 0 - 360DEG  
C Interval: 15.0DEG  
Test Speed: HIGH  
Temperature:25.3DEG  
Operators:Paul  
Test Date:2017-03-13

$\gamma$  Range: 0 - 180DEG  
 $\gamma$  Interval: 0.5DEG  
Test System:EVERFINE GO-R5000\_V2 SYSTEM V2.0.364  
Humidity:65.0%  
Test Distance:2.900m [K=0.8401]  
Remarks:

LUMINANCE LIMITATION CURVES

Test:U:120.1V I:0.0981A P:9.445W PF:0.8021 Freq:60.01Hz Lamp Flux:1348.38x1 lm		
NAME: 2'LED T8 Tube	TYPE:clear	WEIGHT:
SPEC.:	DIM.:	SERIAL No.:
MFR.: EVERFINE	SUR.:0.55*0.03	Shielding Angle:



LUMINANCE cd/(m2)		
G (DEG)	C0/180	C90/270
85	28669	26262
80	34880	19780
75	31147	22883
70	29832	22973
65	31475	22027
60	30063	26372
55	29496	29733
50	27935	27623
45	27760	26791

C Range: 0 - 360DEG  
 C Interval: 15.0DEG  
 Test Speed: HIGH  
 Temperature:25.3DEG  
 Operators:Paul  
 Test Date:2017-03-13

γ Range: 0 - 180DEG  
 γ Interval: 0.5DEG  
 Test System:EVERFINE GO-R5000\_V2 SYSTEM V2.0.364  
 Humidity:65.0%  
 Test Distance:2.900m [K=0.8401]  
 Remarks:

WEC AND CCEC

Test:U:120.1V I:0.0981A P:9.445W PF:0.8021 Freq:60.01Hz Lamp Flux:1348.38x1 lm														
NAME: 2'LED T8 Tube					TYPE:clear					WEIGHT:				
SPEC.:					DIM.:					SERIAL No.:				
MFR.: EVERFINE					SUR.:0.55*0.03					Shielding Angle:				

pcc	80%			70%			50%			30%			10%			0
pw	50%	30%	10%	50%	30%	10%	50%	30%	10%	50%	30%	10%	50%	30%	10%	0
pfc	20%			20%			20%			20%			20%			0
RCR	RCR:Room Cavity Ratio						Wall Exitance Coefficients(WEC)									
0.0																
1.0	.311	.177	.056	.304	.173	.055	.290	.167	.053	.278	.160	.051	.266	.154	.050	
2.0	.293	.161	.049	.286	.158	.049	.274	.153	.047	.263	.148	.046	.253	.143	.045	
3.0	.271	.144	.043	.265	.142	.043	.255	.138	.042	.245	.134	.041	.235	.130	.040	
4.0	.250	.130	.038	.245	.128	.038	.235	.125	.037	.227	.122	.037	.218	.119	.036	
5.0	.231	.118	.034	.227	.116	.034	.218	.114	.033	.210	.111	.033	.203	.108	.033	
6.0	.214	.107	.031	.210	.106	.031	.203	.104	.030	.196	.102	.030	.189	.099	.030	
7.0	.199	.099	.028	.196	.098	.028	.189	.096	.028	.183	.094	.027	.177	.092	.027	
8.0	.186	.091	.026	.183	.090	.025	.177	.088	.025	.171	.087	.025	.166	.085	.025	
9.0	.174	.084	.024	.172	.084	.023	.166	.082	.023	.161	.081	.023	.156	.079	.023	
10.0	.164	.079	.022	.161	.078	.022	.156	.077	.022	.152	.075	.021	.147	.074	.021	

pcc	80%			70%			50%			30%			10%			0
pw	50%	30%	10%	50%	30%	10%	50%	30%	10%	50%	30%	10%	50%	30%	10%	0
pfc	20%			20%			20%			20%			20%			0
RCR	RCR:Room Cavity Ratio						Ceiling Cavity Exitance Coefficients(CCEC)									
0.0	.197	.197	.197	.168	.168	.168	.115	.115	.115	.066	.066	.066	.021	.021	.021	
1.0	.187	.163	.141	.160	.140	.121	.109	.096	.084	.063	.056	.049	.020	.018	.016	
2.0	.179	.139	.105	.153	.119	.090	.105	.083	.063	.061	.048	.037	.019	.016	.012	
3.0	.171	.121	.081	.147	.104	.070	.101	.073	.049	.058	.042	.029	.019	.014	.009	
4.0	.164	.108	.065	.141	.093	.056	.097	.065	.040	.056	.038	.024	.018	.012	.008	
5.0	.156	.097	.054	.134	.084	.047	.093	.059	.033	.054	.035	.020	.017	.011	.006	
6.0	.149	.089	.046	.128	.077	.040	.089	.054	.028	.051	.032	.017	.017	.010	.006	
7.0	.142	.082	.040	.123	.071	.035	.085	.050	.025	.049	.029	.015	.016	.010	.005	
8.0	.136	.076	.035	.117	.066	.031	.081	.047	.022	.047	.027	.013	.015	.009	.004	
9.0	.130	.071	.032	.112	.062	.028	.078	.044	.020	.045	.026	.012	.015	.008	.004	
10.0	.124	.067	.029	.107	.058	.026	.074	.041	.018	.043	.024	.011	.014	.008	.004	

C Range: 0 - 360DEG  
 C Interval: 15.0DEG  
 Test Speed: HIGH  
 Temperature:25.3DEG  
 Operators:Paul  
 Test Date:2017-03-13

γ Range: 0 - 180DEG  
 γ Interval: 0.5DEG  
 Test System:EVERFINE GO-R5000\_V2 SYSTEM V2.0.364  
 Humidity:65.0%  
 Test Distance:2.900m [K=0.8401]  
 Remarks:

UGR(Unified Glare Rating) Table

Test:U:120.1V I:0.0981A P:9.445W PF:0.8021 Freq:60.01Hz Lamp Flux:1348.38x1 lm										
NAME: 2'LED T8 Tube					TYPE:clear			WEIGHT:		
SPEC.:					DIM.:			SERIAL No.:		
MFR.: EVERFINE					SUR.:0.55*0.03			Shielding Angle:		
ceiling/cavity	0.7	0.7	0.5	0.5	0.3	0.7	0.7	0.5	0.5	0.3
walls	0.5	0.3	0.5	0.3	0.3	0.5	0.3	0.5	0.3	0.3
working plane	0.2	0.2	0.2	0.2	0.2	0.2	0.2	0.2	0.2	0.2
Room dimensions	Viewed crosswise					Viewed endwise				
x = 2H y = 2H	24.2	25.7	24.5	26.0	26.2	23.6	25.1	23.9	25.3	25.6
3H	26.1	27.5	26.4	27.7	28.0	25.2	26.7	25.6	26.9	27.2
4H	26.9	28.3	27.3	28.5	28.8	25.9	27.2	26.2	27.5	27.8
6H	27.8	29.0	28.1	29.3	29.6	26.4	27.7	26.8	28.0	28.3
8H	28.2	29.4	28.5	29.7	30.0	26.6	27.8	27.0	28.1	28.4
12H	28.4	29.5	28.7	29.9	30.2	26.8	28.0	27.2	28.3	28.6
4H 2H	24.9	26.3	25.2	26.5	26.8	24.5	25.8	24.8	26.1	26.4
3H	27.0	28.1	27.3	28.4	28.8	26.3	27.5	26.7	27.8	28.1
4H	28.0	29.1	28.4	29.4	29.8	27.1	28.2	27.5	28.6	28.9
6H	29.1	30.0	29.5	30.4	30.8	27.8	28.8	28.3	29.2	29.5
8H	29.5	30.4	30.0	30.8	31.2	28.1	29.0	28.5	29.4	29.8
12H	29.8	30.6	30.2	31.0	31.4	28.4	29.2	28.8	29.6	30.0
8H 4H	28.4	29.3	28.9	29.7	30.1	27.7	28.6	28.1	28.9	29.3
6H	29.7	30.4	30.1	30.8	31.3	28.6	29.4	29.1	29.8	30.2
8H	30.3	31.0	30.8	31.4	31.9	29.1	29.7	29.6	30.2	30.7
12H	30.6	31.2	31.1	31.6	32.1	29.5	30.1	30.0	30.6	31.1
12H 4H	28.5	29.3	28.9	29.7	30.1	27.8	28.6	28.2	29.0	29.4
6H	29.8	30.5	30.3	30.9	31.4	28.8	29.5	29.3	29.9	30.4
8H	30.5	31.0	31.0	31.5	32.0	29.4	29.9	29.9	30.4	30.9
Variations with the observer position at spacings:										
S = 1.0H	+ 0.1 / - 0.1					+ 0.1 / - 0.2				
1.5H	+ 0.2 / - 0.2					+ 0.3 / - 0.4				
2.0H	+ 0.2 / - 0.4					+ 0.3 / - 0.6				

CIE Pub.117, 1348 lm Total Lamp Luminous Flux Correct (8log(F/F0) = 1.0)

C Range: 0 - 360DEG  
 C Interval: 15.0DEG  
 Test Speed: HIGH  
 Temperature:25.3DEG  
 Operators:Paul  
 Test Date:2017-03-13

γ Range: 0 - 180DEG  
 γ Interval: 0.5DEG  
 Test System:EVERFINE GO-R5000\_V2 SYSTEM V2.0.364  
 Humidity:65.0%  
 Test Distance:2.900m [K=0.8401]  
 Remarks:

UTILIZATION FACTORS TABLE

Test:U:120.1V I:0.0981A P:9.445W PF:0.8021 Freq:60.01Hz Lamp Flux:1348.38x1 lm		
NAME: 2'LED T8 Tube	TYPE:clear	WEIGHT:
SPEC.:	DIM.:	SERIAL No.:
MFR.: EVERFINE	SUR.:0.55*0.03	Shielding Angle:

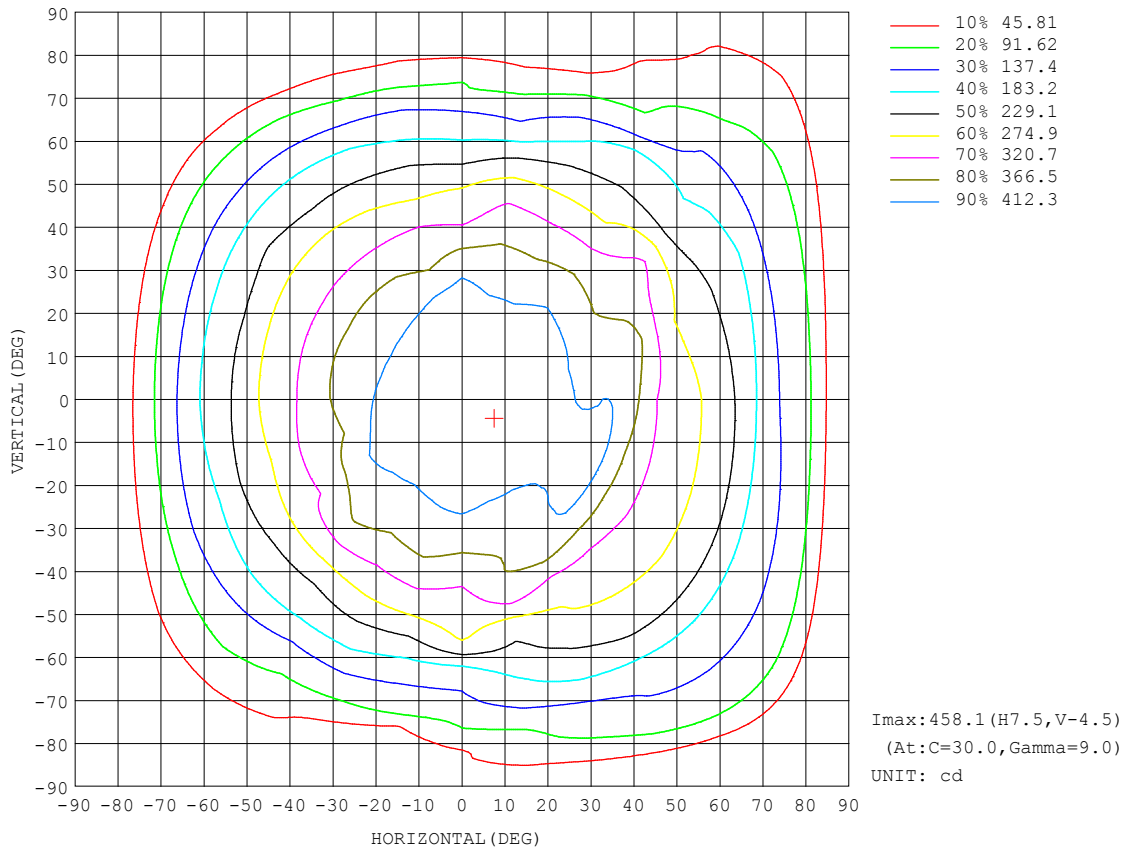
REFLECTANCE										
Ceiling	0.8	0.8	0.8	0.7	0.7	0.7	0.5	0.5	0.5	0
Walls	0.7	0.5	0.3	0.7	0.5	0.3	0.7	0.5	0.3	0
Working plane	0.2	0.2	0.2	0.2	0.2	0.2	0.2	0.2	0.2	0
ROOM INDEX	UTILIZATION FACTORS (PERCENT) $k(RI) \times RCR = 5$									
k = 0.60	57	45	38	56	45	38	55	44	38	31
0.80	67	55	48	66	55	48	64	54	47	40
1.00	75	64	57	74	64	56	72	65	56	49
1.25	82	72	65	81	71	64	78	70	63	56
1.50	88	78	70	86	77	70	83	75	69	61
2.00	94	86	79	93	85	78	89	82	77	69
2.50	98	91	84	96	89	83	92	86	82	73
3.00	102	95	89	100	93	88	95	90	86	77
4.00	106	100	95	103	98	94	99	95	91	82
5.00	108	103	99	106	101	98	101	98	94	85
ROOM INDEX	UF(total)									Direct
According to DIN EN 13032-2 2004			Suspended				SHRNOM = 1.25			

C Range: 0 - 360DEG  
 C Interval: 15.0DEG  
 Test Speed: HIGH  
 Temperature:25.3DEG  
 Operators:Paul  
 Test Date:2017-03-13

$\gamma$  Range: 0 - 180DEG  
 $\gamma$  Interval: 0.5DEG  
 Test System:EVERFINE GO-R5000\_V2 SYSTEM V2.0.364  
 Humidity:65.0%  
 Test Distance:2.900m [K=0.8401]  
 Remarks:

ISOCANDELA DIAGRAM

Test:U:120.1V I:0.0981A P:9.445W PF:0.8021 Freq:60.01Hz Lamp Flux:1348.38x1 lm		
NAME: 2'LED T8 Tube	TYPE:clear	WEIGHT:
SPEC.:	DIM.:	SERIAL No.:
MFR.: EVERFINE	SUR.:0.55*0.03	Shielding Angle:

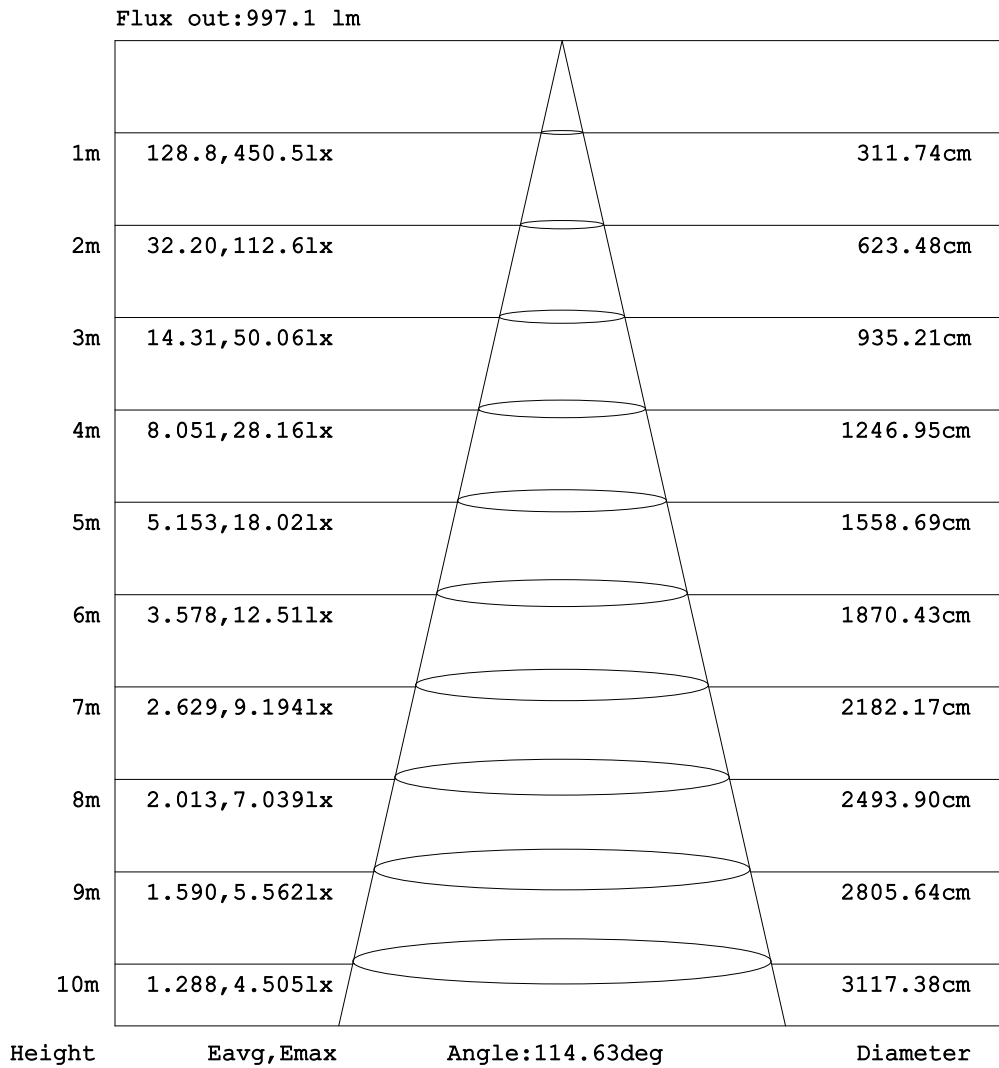


C Range: 0 - 360DEG  
 C Interval: 15.0DEG  
 Test Speed: HIGH  
 Temperature: 25.3DEG  
 Operators: Paul  
 Test Date: 2017-03-13

γ Range: 0 - 180DEG  
 γ Interval: 0.5DEG  
 Test System: EVERFINE GO-R5000\_V2 SYSTEM V2.0.364  
 Humidity: 65.0%  
 Test Distance: 2.900m [K=0.8401]  
 Remarks:

AAI Figure

Test:U:120.1V I:0.0981A P:9.445W PF:0.8021 Freq:60.01Hz Lamp Flux:1348.38x1 lm		
NAME: 2'LED T8 Tube	TYPE:clear	WEIGHT:
SPEC.:	DIM.:	SERIAL No.:
MFR.: EVERFINE	SUR.:0.55*0.03	Shielding Angle:



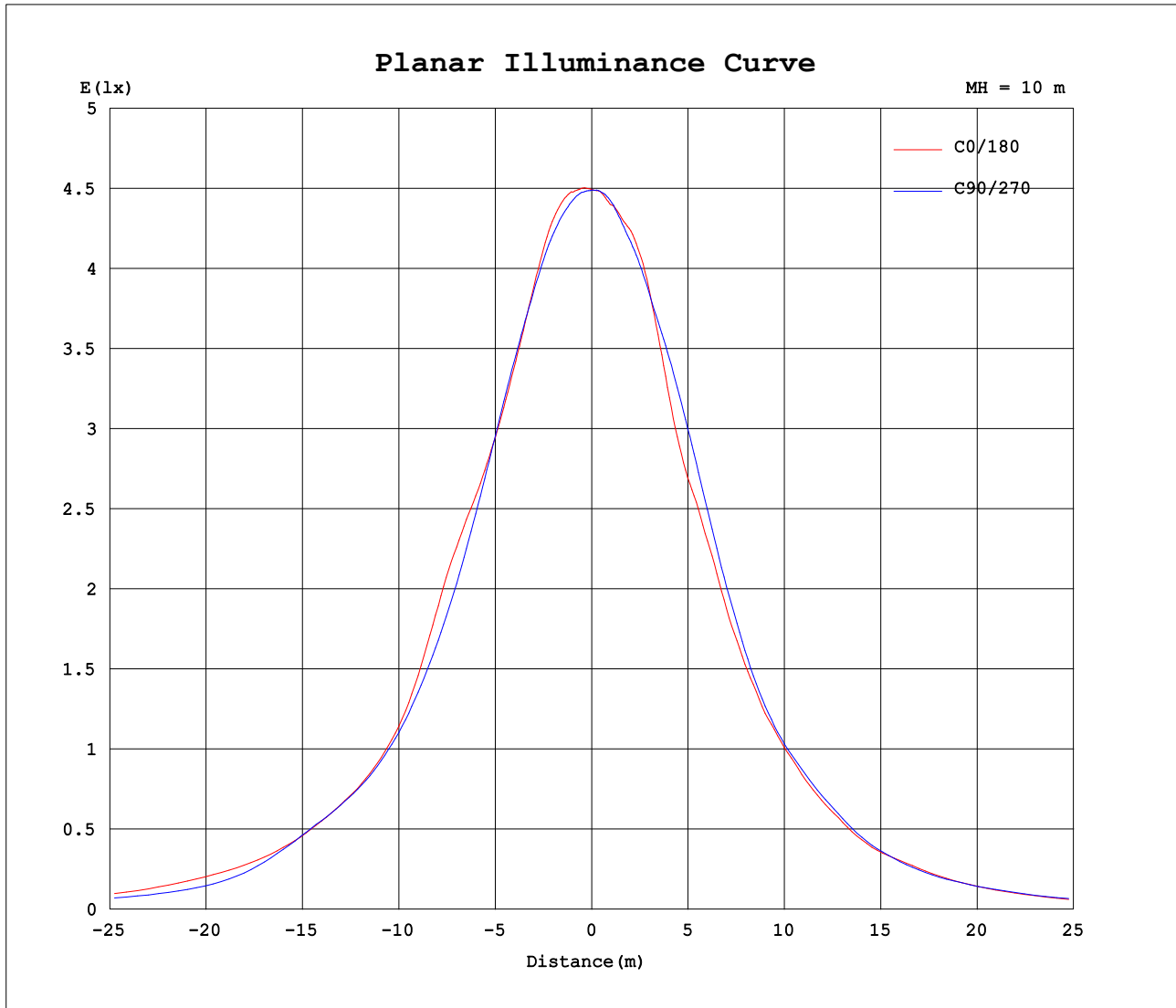
Note: The Curves indicate the illuminated area and the average illumination when the luminaire is at different distance.

C Range: 0 - 360DEG  
 C Interval: 15.0DEG  
 Test Speed: HIGH  
 Temperature: 25.3DEG  
 Operators: Paul  
 Test Date: 2017-03-13

γ Range: 0 - 180DEG  
 γ Interval: 0.5DEG  
 Test System: EVERFINE GO-R5000\_V2 SYSTEM V2.0.364  
 Humidity: 65.0%  
 Test Distance: 2.900m [K=0.8401]  
 Remarks:



Planar Illuminance Curve



C Range: 0 - 360DEG  
 C Interval: 15.0DEG  
 Test Speed: HIGH  
 Temperature: 25.3DEG  
 Operators: Paul  
 Test Date: 2017-03-13

$\gamma$  Range: 0 - 180DEG  
 $\gamma$  Interval: 0.5DEG  
 Test System: EVERFINE GO-R5000\_V2 SYSTEM V2.0.364  
 Humidity: 65.0%  
 Test Distance: 2.900m [K=0.8401]  
 Remarks:

LUMINOUS DISTRIBUTION INTENSITY DATA

Test:U:120.1V I:0.0981A P:9.445W PF:0.8021 Freq:60.01Hz Lamp Flux:1348.38x1 lm		
NAME: 2'LED T8 Tube	TYPE:clear	WEIGHT:
SPEC.:	DIM.:	SERIAL No.:
MFR.: EVERFINE	SUR.:0.55*0.03	Shielding Angle:

Table--1

UNIT: cd

C (DEG) \ γ (DEG)	0	15	30	45	60	75	90	105	120	135	150	165	180	195	210	225	240	255	270
0	449	449	449	449	449	449	449	449	450	449	449	449	449	449	449	449	449	449	449
5	454	454	454	454	452	451	449	448	446	448	448	446	447	447	447	448	447	448	449
10	457	458	458	457	456	454	447	444	441	442	443	445	448	451	451	451	448	447	443
15	448	446	445	446	448	448	442	435	431	431	437	445	447	445	443	446	447	445	439
20	429	428	427	428	429	432	432	423	420	421	430	426	417	408	407	413	424	437	433
25	415	417	418	414	409	410	419	412	405	409	413	389	382	385	386	384	387	410	425
30	409	421	423	414	397	390	397	398	388	397	380	359	369	373	372	374	373	372	402
35	412	415	413	413	397	373	370	380	365	378	340	345	342	342	342	344	353	348	367
40	381	362	358	364	382	366	342	352	337	347	318	314	312	313	316	315	320	327	324
45	324	323	323	318	324	357	313	321	306	302	295	284	286	289	291	294	290	291	292
50	296	308	309	298	285	299	293	285	273	252	251	255	257	257	258	264	261	257	269
55	279	283	283	276	267	243	281	240	233	217	213	223	218	224	229	224	226	231	225
60	248	257	257	248	238	218	218	192	195	183	184	179	192	188	191	195	196	194	185
65	219	218	216	215	210	188	154	152	153	135	145	151	148	146	147	150	156	157	153
70	168	173	171	168	163	160	130	124	111	97.3	114	107	101	102	104	104	109	118	112
75	133	145	145	137	121	110	97.7	70.9	66.7	63.1	68.1	67.2	63.3	55.8	54.9	62.4	70.4	72.1	81.9
80	99.9	104	103	100	93.9	79.7	56.7	31.1	18.4	35.5	34.1	16.6	9.57	9.54	9.62	9.92	15.9	36.8	40.3
85	41.2	30.1	26.3	30.1	41.8	49.8	37.8	14.4	4.07	11.5	8.68	7.76	7.66	7.65	7.75	7.88	8.09	8.87	12.0
90	9.11	8.73	8.52	8.24	7.99	7.98	7.54	3.74	0.42	4.19	6.00	6.06	6.10	5.92	5.93	6.35	6.60	6.83	6.33
95	8.70	8.34	8.08	8.08	7.64	5.66	4.73	1.83	0.10	2.40	4.08	4.15	4.02	3.73	3.64	4.04	4.41	4.65	4.11
100	4.81	4.50	4.22	4.30	4.33	4.25	3.60	1.13	0.11	1.59	3.08	3.42	3.38	3.12	3.01	3.39	3.69	3.76	2.92
105	4.00	3.69	3.44	3.49	3.55	3.50	2.69	0.81	0.12	1.11	2.37	2.78	2.84	2.63	2.52	2.85	3.05	2.95	2.14
110	3.26	2.95	2.73	2.90	3.04	2.79	2.01	0.65	0.15	0.77	1.84	2.25	2.32	2.18	2.09	2.34	2.46	2.28	1.59
115	2.66	2.47	2.29	2.43	2.44	2.25	1.54	0.56	0.17	0.59	1.44	1.79	1.89	1.78	1.73	1.90	1.97	1.78	1.16
120	2.15	2.03	1.89	2.00	2.01	1.85	1.23	0.50	0.22	0.48	1.11	1.45	1.53	1.45	1.42	1.54	1.55	1.39	0.84
125	1.79	1.68	1.59	1.68	1.70	1.51	1.02	0.47	0.23	0.42	0.88	1.20	1.23	1.20	1.20	1.24	1.23	1.08	0.63
130	1.53	1.43	1.38	1.44	1.45	1.23	0.87	0.45	0.27	0.39	0.71	0.99	1.01	1.00	1.00	1.01	1.01	0.85	0.51
135	1.28	1.26	1.25	1.26	1.21	1.04	0.74	0.44	0.30	0.37	0.58	0.80	0.86	0.87	0.87	0.87	0.84	0.69	0.44
140	1.04	1.07	1.08	1.05	1.00	0.86	0.63	0.41	0.31	0.35	0.48	0.64	0.74	0.78	0.78	0.76	0.70	0.57	0.40
145	0.85	0.90	0.91	0.88	0.83	0.71	0.54	0.38	0.30	0.32	0.41	0.51	0.64	0.68	0.69	0.66	0.60	0.50	0.39
150	0.69	0.74	0.75	0.73	0.68	0.58	0.46	0.35	0.29	0.30	0.35	0.41	0.56	0.58	0.60	0.57	0.53	0.46	0.39
155	0.58	0.62	0.63	0.62	0.57	0.50	0.41	0.34	0.29	0.30	0.32	0.37	0.49	0.51	0.52	0.51	0.48	0.45	0.40
160	0.50	0.53	0.54	0.53	0.50	0.43	0.38	0.34	0.30	0.32	0.32	0.34	0.45	0.46	0.47	0.46	0.45	0.43	0.40
165	0.43	0.43	0.43	0.43	0.43	0.39	0.37	0.34	0.31	0.33	0.33	0.33	0.41	0.41	0.42	0.42	0.41	0.40	0.40
170	0.38	0.39	0.40	0.40	0.39	0.37	0.33	0.33	0.33	0.33	0.33	0.35	0.39	0.39	0.39	0.38	0.39	0.40	0.40
175	0.37	0.37	0.37	0.36	0.34	0.34	0.34	0.34	0.34	0.34	0.35	0.34	0.37	0.37	0.38	0.38	0.39	0.40	0.38
180	0.37	0.30	0.34	0.34	0.34	0.40	0.40	0.40	0.42	0.38	0.35	0.35	0.34	0.35	0.34	0.34	0.34	0.36	0.37

C Range: 0 - 360DEG  
 C Interval: 15.0DEG  
 Test Speed: HIGH  
 Temperature:25.3DEG  
 Operators:Paul  
 Test Date:2017-03-13

γ Range: 0 - 180DEG  
 γ Interval: 0.5DEG  
 Test System:EVERFINE GO-R5000\_V2 SYSTEM V2.0.364  
 Humidity:65.0%  
 Test Distance:2.900m [K=0.8401]  
 Remarks:

LUMINOUS DISTRIBUTION INTENSITY DATA

Test:U:120.1V I:0.0981A P:9.445W PF:0.8021 Freq:60.01Hz Lamp Flux:1348.38x1 lm		
NAME: 2'LED T8 Tube	TYPE:clear	WEIGHT:
SPEC.:	DIM.:	SERIAL No.:
MFR.: EVERFINE	SUR.:0.55*0.03	Shielding Angle:

Table--2

UNIT: cd

C (DEG) \ γ (DEG)	285	300	315	330	345														
0	449	450	449	449	449														
5	449	449	450	451	452														
10	445	445	448	452	455														
15	438	439	444	449	451														
20	427	429	438	441	435														
25	412	413	427	423	415														
30	394	392	407	397	398														
35	375	373	385	371	390														
40	355	349	354	351	387														
45	331	321	319	339	352														
50	295	286	282	330	289														
55	251	252	248	273	257														
60	193	211	224	210	240														
65	139	170	199	182	206														
70	106	122	115	151	174														
75	60.4	72.2	81.5	122	124														
80	32.3	28.4	57.2	73.9	95.9														
85	14.0	8.91	27.2	51.1	61.6														
90	3.38	1.13	7.36	9.02	9.15														
95	1.32	0.32	4.10	6.24	7.95														
100	0.81	0.26	2.86	4.79	4.94														
105	0.54	0.26	2.01	3.77	4.00														
110	0.39	0.26	1.48	2.92	3.31														
115	0.31	0.25	1.11	2.22	2.63														
120	0.27	0.24	0.86	1.71	2.12														
125	0.24	0.24	0.70	1.31	1.73														
130	0.24	0.25	0.59	1.06	1.39														
135	0.26	0.28	0.53	0.88	1.14														
140	0.29	0.32	0.47	0.75	0.95														
145	0.32	0.35	0.45	0.65	0.81														
150	0.36	0.37	0.43	0.56	0.69														
155	0.38	0.39	0.42	0.49	0.59														
160	0.39	0.38	0.42	0.46	0.51														
165	0.40	0.38	0.41	0.43	0.45														
170	0.39	0.38	0.40	0.40	0.42														
175	0.38	0.38	0.40	0.40	0.40														
180	0.37	0.38	0.37	0.38	0.37														

C Range: 0 - 360DEG  
 C Interval: 15.0DEG  
 Test Speed: HIGH  
 Temperature:25.3DEG  
 Operators:Paul  
 Test Date:2017-03-13

γ Range: 0 - 180DEG  
 γ Interval: 0.5DEG  
 Test System:EVERFINE GO-R5000\_V2 SYSTEM V2.0.364  
 Humidity:65.0%  
 Test Distance:2.900m [K=0.8401]  
 Remarks: